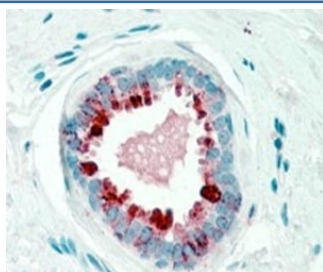


GCDFP-15 Antibody / PIP (R34069)

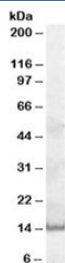
Catalog No.	Formulation	Size
R34069-100UG	0.5 mg/ml in 1X TBS, pH7.3, with 0.5% BSA (US sourced) and 0.02% sodium azide	100 ug

[Bulk quote request](#)

Availability	1-3 business days
Species Reactivity	Human
Format	Antigen affinity purified
Clonality	Polyclonal (goat origin)
Isotype	Goat Ig
Purity	Antigen affinity
UniProt	P12273
Gene ID	5304
Localization	Cytoplasmic (Golgi bodies), secreted
Applications	Western Blot : 0.3-1ug/ml Immunohistochemistry (FFPE) : 2-3ug/ml ELISA (peptide) LOD : 1:128000
Limitations	This GCDFP-15 antibody is available for research use only.



IHC staining of FFPE human breast with GCDFP-15 antibody at 2.5ug/ml. HIER: steamed with pH6 citrate buffer, AP-staining.



Western blot testing of A431 cell lysate with GCDFP-15 antibody at 0.3ug/ml. Predicted molecular weight ~15kDa.

Description

Additional name(s) for this target protein: Prolactin-induced protein; gross cystic disease fluid protein 15; PIP

Application Notes

Optimal dilution of the GCDFP-15 antibody should be determined by the researcher.

Immunogen

Amino acids GANKAQDNTRK were used as the immunogen for this GCDFP-15 antibody.

Storage

Aliquot and store the GCDFP-15 antibody at -20oC.