

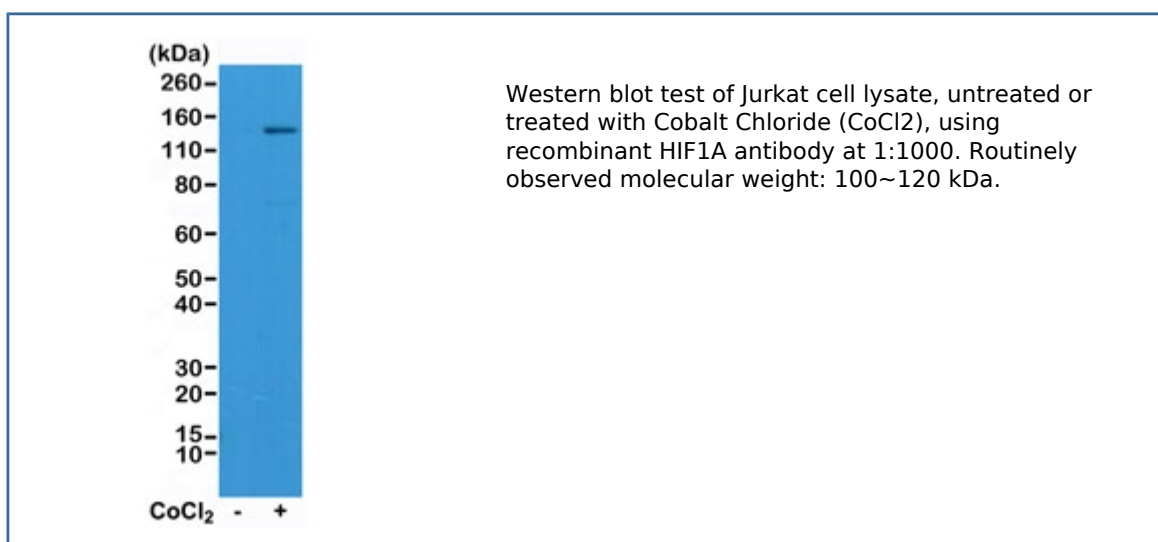
## Recombinant HIF1A Antibody [clone RM242] (R20263)

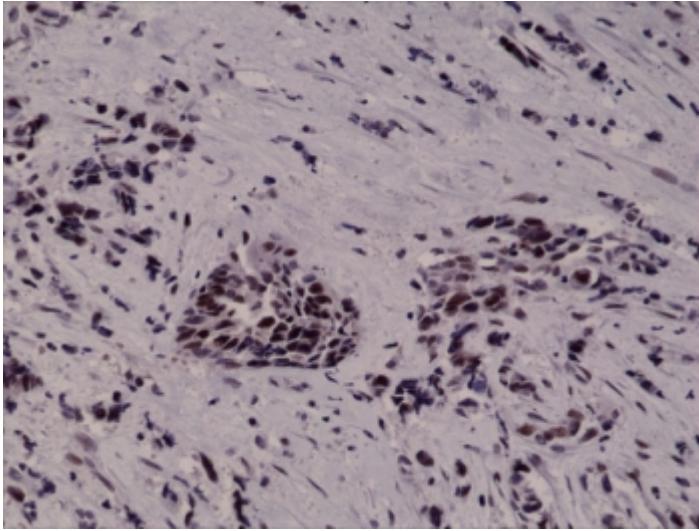
Catalog No.	Formulation	Size
R20263-0.1ML	Antibody in PBS with 50% glycerol, 1% BSA and 0.09% sodium azide	100 ul
R20263SAF-0.1ML	Antibody in PBS without glycerol/BSA/sodium azide	100 ul

Recombinant RABBIT MONOCLONAL

[Bulk quote request](#)

<b>Availability</b>	1-3 business days
<b>Species Reactivity</b>	Human
<b>Format</b>	Purified
<b>Clonality</b>	Recombinant Rabbit Monoclonal
<b>Isotype</b>	Rabbit IgG
<b>Clone Name</b>	RM242
<b>Purity</b>	Protein A purified from animal origin-free supernatant
<b>UniProt</b>	Q16665
<b>Gene ID</b>	3091
<b>Localization</b>	Nuclear, possible cytoplasmic
<b>Applications</b>	IHC (FFPE) : 1:500-1:1000 (1) Western blot : 1:1000-1:2000
<b>Limitations</b>	This recombinant HIF1A antibody is available for research use only.





IHC testing of FFPE human breast cancer tissue with recombinant HIF1A antibody at 1:1000.

## Description

This recombinant HIF1A antibody reacts to human Hypoxia-inducible factor 1-alpha.

## Application Notes

The stated application concentrations are suggested starting points. Titration of the recombinant HIF1A antibody may be required due to differences in protocols and secondary/substrate sensitivity.

1. A pH6 Citrate buffer or pH9 Tris/EDTA buffer HIERS step is recommended for testing of FFPE tissue sections.

## Immunogen

A peptide corresponding to Hypoxia-inducible factor 1-alpha was used as the immunogen for this recombinant HIF1A antibody.

## Storage

Store the recombinant HIF1A antibody at -20oC (with glycerol) or aliquot and store at -20oC (without glycerol).